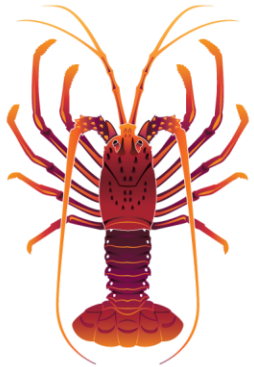


Summary of IPA Projects



Western
**ROCK
LOBSTER**

World leading sustainable fishery



IPA Projects



Project No.	Title	Start Date	End Date
Current Projects			
IPA 2014-406	RD&E Administration	3-Sep-14	30-Jun-19
IPA 2016-070	Professional Development - Directors and Industry Office Bearers (Variation to Project No. 2014-406)	1-Dec-16	30-Nov-19
IPA 2016-071	Professional Development - Industry Busaries (Variation to Project No. 2014-406)	15-Jan-17	30-Jun-19
IPA 2016-164	Holding 12th International Conference and Workshop on Lobster	1-Mar-17	30-Jun-17
IPA 2017-137	Understanding the Markets for Western Rock Lobster (Phase 1 Market Intelligence)	26-Mar-18	9-May-19
IPA 2017-138	Understanding the Markets for Western Rock Lobster	14-Jul-18	4-Jun-21
IPA 2017-140	Digitising the Western Rock Lobster Industry	14-Jul-18	31-Oct-21
IPA 2018 -117	Western Australian based Institute for Spiny Lobster Research Business Plan	3-Sep-18	31-Mar-19
IPA 2017-147	Develop a strong current warning system and inform knowledge of the nearshore current regime influencing the Western Rock Lobster fishery - Initiated by UWA	Project Managed by External Party	
IPA 2016-260	Assess causes and implications of anomalous low lobster catch rates in the shallow water areas near the centre of the Western Rock Lobster fishery - Initiated by UWA	Project Managed by External Party	
IPA 2016-124	Determining variation in catchability of western rock lobsters to standardise important abundance indices used for stock assessment - Initiated by DPIRD WA	Project Managed by External Party	

Summary of West Coast Rock Lobster Whale Entanglement Mitigation Workshop Options 2019

Friday, 6 September 2019

Low Impact Options (implement for 2020/21 season)	Medium Impact Options (consider when annual number of entanglements* exceed 10)	High Impact Options (consider when annual number entanglements* exceed 15)
1. Extend the period when gear modifications are required to include the months of April and November**	1. Reduce pot usage rates during May to November; and implement a sliding scale of pot usage reductions such that smaller operators are still viable.	1. Implement a water depth based fishing closure during the northern migration
2. Apply a 7 day pull rule to the shallow water ***	2. Implement more drastic reduction in pot usage rates during the northern whale migration (i.e. May - July)	2. Increase depth at which fishers are allowed to use 3 floats
3. Industry to undertake voluntary whale sightings surveys, using the whale sightings app	3. Make the use of lead core rope (spliced into rope) mandatory	3. Shorten the length of rope which can be used to 1.5 times the water depth
4. Explore options for fishers to be trained and to deploy tracking buoys on entangled whales		4. Adjust float rigs such that floats detach easily should a whale become entangled
5. Undertake an education program to promote the positive measures undertaken by industry to mitigate interactions with whales		5. Decrease pot usage rates and re-define them in terms of the number of vertical lines (allows multiple pots per line)

* reported entanglements in gear identified as having come from the West Coast Rock Lobster Managed Fishery

** Pot usage rates (50% in May to October) to remain unchanged

*** shallow water = <18 fathoms of rope